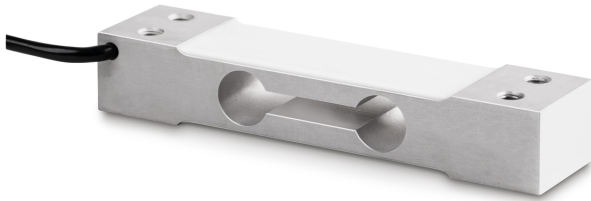


KERN CP 3-2Y1

KERN

Single-point load cell made of anodised aluminium



Category

Brand	Sauter
Product category	Measuring cell
Product group	Load cell
Product family	CP Y1

Measuring System

Weighing capacity [Max]	3 kg
Load cell connection	4-wire
Load cell OIML class	C2
Load cell - characteristic value - nominal	2 mV/V
Load cell - characteristic value - variance	0,2 mV/V
Load cell - Combined error	0,03%
Load cell - Dead load [Min] (%)	0%
Measuring applications	mass
Load cell - Input resistance - nominal	405 Ω
Load cell - Output resistance - nominal	350 Ω
Load cell - Isolation resistance - [Min]	5000 M Ω
Load cell - Recommended excitation voltage [Min]	9 V
Load cell - Recommended excitation voltage [Max]	12 V
Load cell - Input resistance - variance	10 Ω
Load cell - Output resistance - variance	3 Ω
Directions of force	compression

Approval

CE mark	✓
---------	---

Construction

Design	Singlepoint load cell
Dimension (W×D×H)	130×22×30 mm
Dimensions weighing platform (W×D×H)	250×350×0 mm
Material	aluminium
Cable length	0,45 m
Mounting - force application	2 × threaded hole M6
Mounting - force dissipation	2 × threaded hole M6

Functions

IP protection - complete device	IP65
---------------------------------	------

Environmental conditions

Use temperature [Min]	-10 °C
Use temperature [Max]	40 °C
Ambient temperature [Min]	-20 °C
Ambient temperature [Max]	50 °C
Storage temperature [Min]	-30 °C
Storage temperature [Max]	60 °C

Packing & Shipping

Readability force [d] (N)	1 d
Dimensions packaging (W×D×H)	120×50×35 mm
Net weight	0,071 kg
Shipping method	Parcel service
Net weight approx.	0,10 kg
Gross weight approx.	0,10 kg
Shipping weight	0,1 kg

Services (optional)

Article number for DAkkS calibration (compressive force)	963-261V
--	----------

Pictograms

STANDARD



OPTION

